

ALSET<sup>®</sup>  
EHOME



**ALSET EHOME INC.**

To accelerate the advent of SUSTAINABLE HEALTHY LIVING systems around the world.



# DISCLAIMER

This presentation does not constitute an offer to sell or the solicitation of any offer to buy interests in Alset Ehome Inc (“AE”). An investment in AE involves significant risks, including the loss of the entire investment. Restrictions apply to transfers and withdrawals of shares in the offering. Before deciding to invest in any offerings, prospective investors should read any future offering document and pay particular attention to the risk factors contained within. Prospective investors should make their own investigation and evaluation of the information contained in this presentation. Each prospective investor should consult their own attorney, business adviser and tax adviser as to legal, business, tax and related matters concerning the information contained herein. Certain information contained in this presentation constitutes “forward-looking statements,” which can be identified by the use of forward-looking terminology such as “may,” “will,” “should,” “expect,” “anticipate,” “target,” “project,” “estimate,” “intend,” “continue” or “believe,” or the negatives thereof or other variations thereon or comparable terminology. Readers are cautioned not to place undue reliance on these forward-looking statements. AE does not undertake any obligation to publicly release the result of any revisions to these forward-looking statements to reflect events or circumstances after the date hereof to reflect the occurrence of unanticipated events. Due to various risks and uncertainties, actual events or results may differ materially from those reflected or contemplated in such forward-looking statements. Certain information contained in this presentation is based on or derived from information provided by independent third-party sources. AE believes that such information is accurate and that the sources from which it has been obtained are reliable. AE cannot guarantee the accuracy of such information, however, and has not independently verified the assumptions on which such information is based. This presentation is being provided on a confidential basis. Accordingly, this presentation may not be reproduced in whole or in part and may not be delivered to any person without the prior written consent of AE. Past performance is not indicative of future results.

---

## WHO WE ARE

We specialize in land development, home building, sales and rental and property management. Alset EHome Inc. provides quality designer homes with integrated smart technologies at affordable prices. The focus of the company is on building a **Sustainable Healthy Living System** including **American Home REIT for long-term income**.

**Maximizing Returns for Shareholders.**

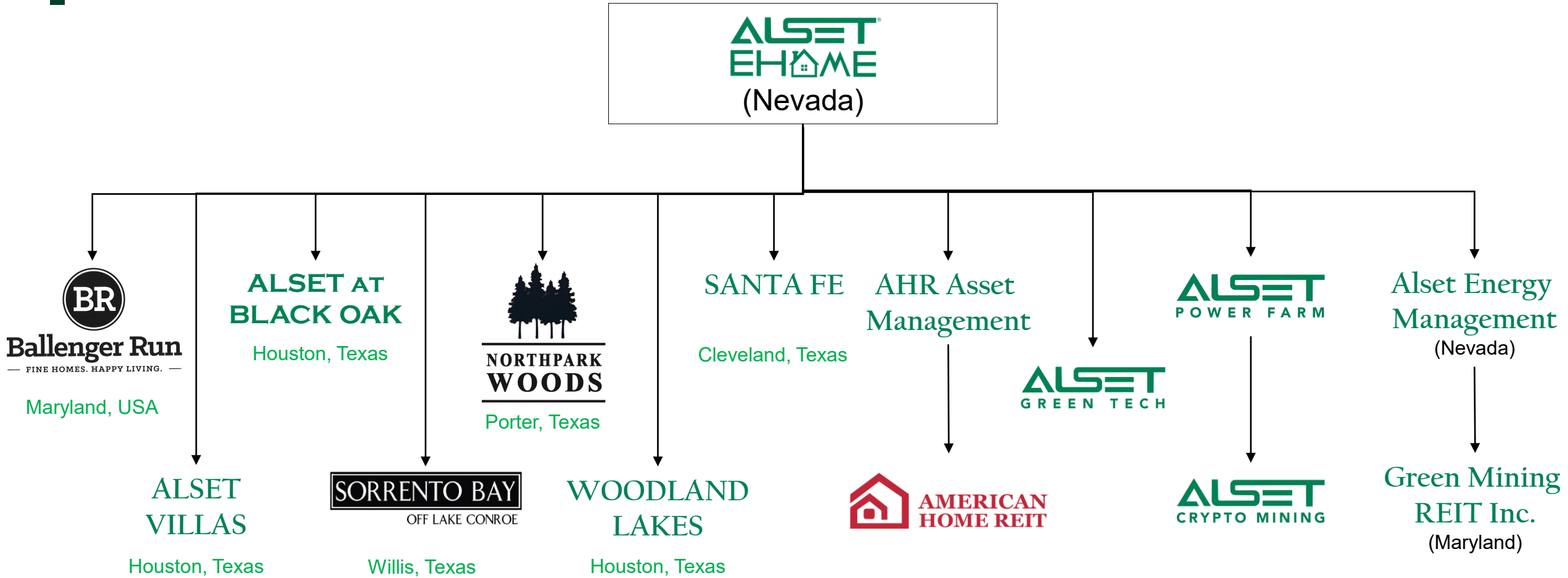
**Vision:** To create the most prominent home builder of the future by leading the world's transition to **SUSTAINABLE HEALTHY LIVING**.

## Our MISSION



To accelerate the advent  
of **SUSTAINABLE  
HEALTHY LIVING**  
systems around the  
world.

# ALSET EHOME ORGANIZATION CHART





# ALSET - BALLENGER RUN



## Ballenger Run

— FINE HOMES. HAPPY LIVING. —

Frederick County, Maryland USA

Total 689 Units  
479 Lots & 210 Multi-family Residential Units



Listed company in NYSE  
Market Cap over: \$19 Billion  
Share Price: >\$5,600

#4 BIGGEST HOME BUILDER IN THE UNITED STATES



100% PRESOLD TO NVR

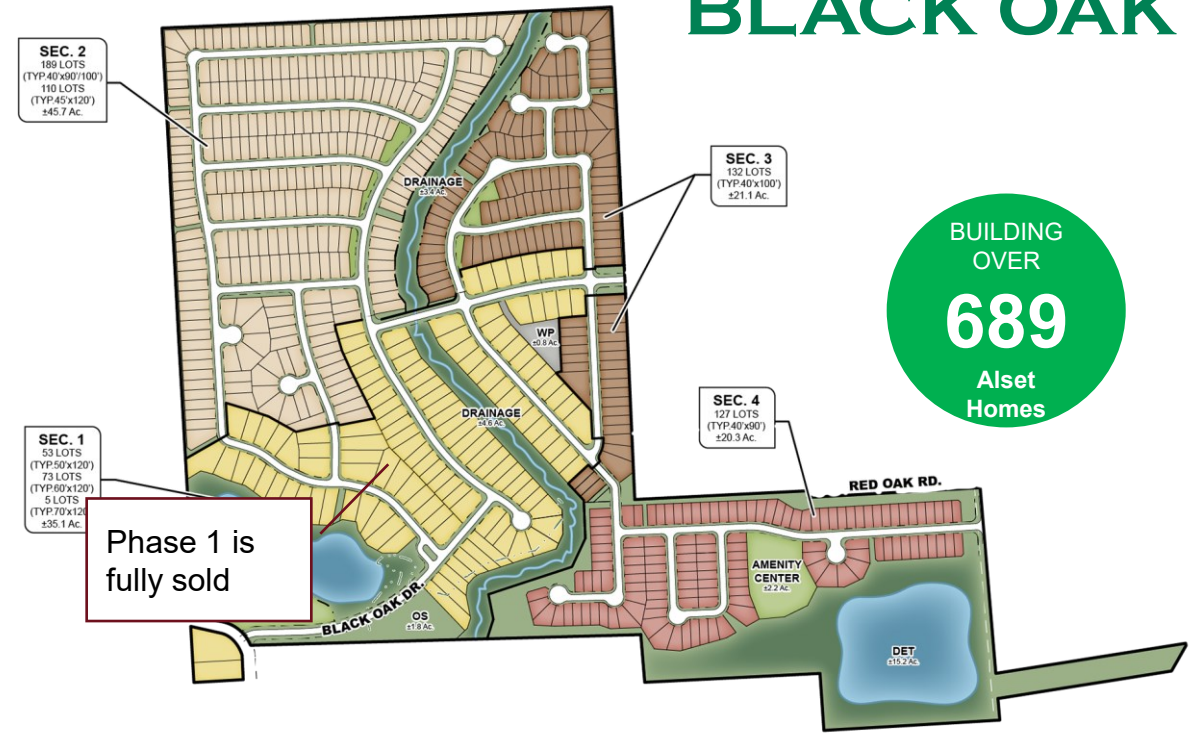




# ALSET @ BLACK OAK

## EHOME COMMUNITY DEVELOPMENT

# ALSET AT BLACK OAK



BUILDING OVER  
**689**  
Alset Homes

Sustainable Living

Sustainable Energy

Sustainable Transport

Alset at Black Oak is a land development project located near The Woodlands in Houston, Texas.





# ALSET @ NORTH PARK WOODS

## EHOME COMMUNITY DEVELOPMENT

CENTURY  
COMMUNITIES®



- Northpark Woods is a land development project located in Porter, Texas.
- Alset EHome International owning up to 100 units in this development. Transforming Home to Alset EHome. Adding Sustainable Healthy Living System with Tesla Powerwall, Tesla Solar Panel, Tesla Wall Connector, Tesla Car and many other features.



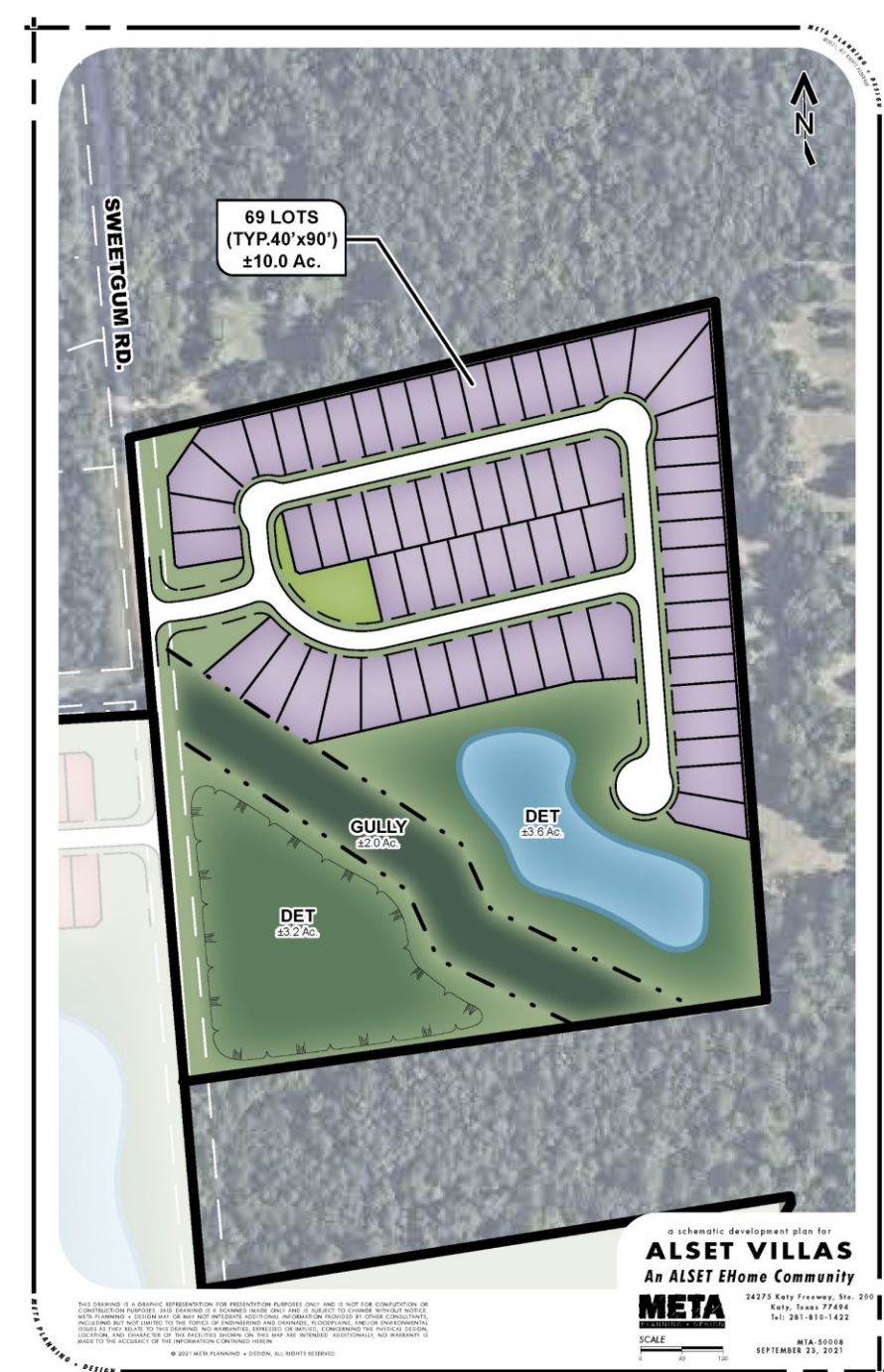


# ALSET VILLAS

## EHOME COMMUNITY DEVELOPMENT

- Alset Villas is a land development project located near The Woodlands in Houston, Texas.
- Situated on approximately 10 acres of land, another prestigious project brought to you by Alset EHome Inc.

BUILDING  
OVER  
**69**  
Alset  
EHome





# ALSET @ SORRENTO BAY

## EHOME COMMUNITY DEVELOPMENT



# SORRENTO BAY

OFF LAKE CONROE

Located in WILLIS, TEXAS 77318

- Sorrento Bay is a beautiful new home community offering affordable houses off Lake Conroe. These beautiful new homes for sale near Conroe, TX are nestled in Willis, TX and give homeowners the ability to enjoy the fresh air and lake life with a wonderful small-town feel.
- Lake Life Living: Residents of Sorrento Bay will have access to a boat ramp directly to Lake Conroe to enjoy boating, jet skiing, fishing, paddle boarding, and a host of other lakeside activities.
- Getting to work or school is a breeze with the community's easy access to I-45 North. Plus, Sorrento Bay is conveniently located only 6 miles away from popular retail, grocery, and restaurant options in Willis, TX like Kroger Marketplace, Whataburger, CVS Pharmacy, and other convenient stores and eateries. Additional favorites are easily available in nearby New Waverly, TX and Conroe, TX.





# ALSET @ WOODLAND LAKES

## EHOME COMMUNITY DEVELOPMENT



## Located in HOUSTON, TEXAS

- Woodland Lakes is in the Northeast market area and the Lake Houston East submarket on the east shore of Lake Houston.
- The project is accessed off East Lake Houston Parkway, which is the first intersection off FM 1960 when traveling east across the Lake Houston bridge on FM 1960. Woodland Lakes is 10 miles east of Highway 69 and 10 miles northeast of Beltway 8, providing access to key employment centers such as Generation Park (12 miles), Kingwood Medical Center (13 miles), George Bush Airport (17 miles), and Downtown Houston (25 miles).
- Just 3 miles west of Woodland Lakes is Atascocita, which has an abundance of shopping, dining and services. In 2005, Newland Communities began the development of Eagle Springs, a highly amenitized 1,360-acre master plan community that was built out in 2016. Resale homes in Eagle Springs range from the low \$200s to the \$600s. Active communities in the Atascocita-West Lake Houston area total 19, with most communities picking up where Eagle Springs left off, offering more amenities, larger lots and homes priced above \$250K. Three builders offer homes priced below \$250K and are competition to Woodland Lakes – Lakeridge Builders at Clayton's Park East, KB Home at Lakewood Pines, and DR Horton at Bridges at Lake Houston.
- Atascocita Commons and nearby retail/commercial centers along FM 1960 in Atascocita provide all the retail, dining and support services for the area. Big box retailers include Target, Kohls, Lowes, HEB Grocery, Kroger Grocery, among others. Dining options include sit down and quick serve restaurants such as Starbucks, Panera Bread, Chick-fil-A, Lupe Tortilla and Applebees. These retail centers are located less than five miles from Woodland Lakes.
- **High Potential Occupancy Rate:** The general area in which Woodland Lakes is located is within the Lake Houston Economic Development Area. Top companies in The Lake Houston Economic Development Area: George Bush Intercontinental Airport, Humble ISD, Insperty, Kingwood Medical Center, Memorial Hermann Hospital Northeast, Lone Star College System, FMC Technologies - Generation Park.



# ALSET @ SANTA FE

## EHOME COMMUNITY DEVELOPMENT



Located in CLEVELAND, TEXAS

- Santa Fe is perfect for growing families, newly married couples, retirees, and the entire like. Whether you're new to the area or simply wanting an upgrade, Santa Fe is a wonderful community.
- **Community Features**
  - Minutes to shopping and dining at Valley Ranch Town Center
  - Easy access to I-69 (US 59)
  - Small Town Feel
  - Low Tax Rates
  - Minutes to Future Grand Parkway Expansion
  - Elementary School within Walking Distance
  - 47 Miles to Houston
  - 24 Miles to Conroe
- **Cleveland Independent School District**

The philosophy of the Cleveland Independent School District is to build a community of empowered, life-long learners, in a way that staff, and community support, can take pride in Cleveland ISD, so that we can develop successful, productive, responsible, and healthy citizens of the world.

# ALSET SUSTAINABLE HEALTHY LIVING SYSTEM

## EHOME COMMUNITY DEVELOPMENT



### EHOME FEATURES



SOLAR ENERGY SYSTEM



SMART HOME



HOME OFFICE



FILTERED WATER

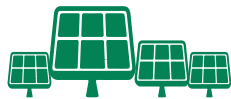


PURIFIED AIR



ELECTRIC VEHICLE

### COMMUNITY FEATURES



SOLAR FARM



VEHICLE-TO-GRID



MODULAR ORGANIC FARM

### UPCOMING FEATURES



ENERGY EFFICIENT HEPA FILTERED HVAC



TELEMEDICAL



ROBOTAXI



ALSET MEMBERSHIP



HWH MEMBERSHIP

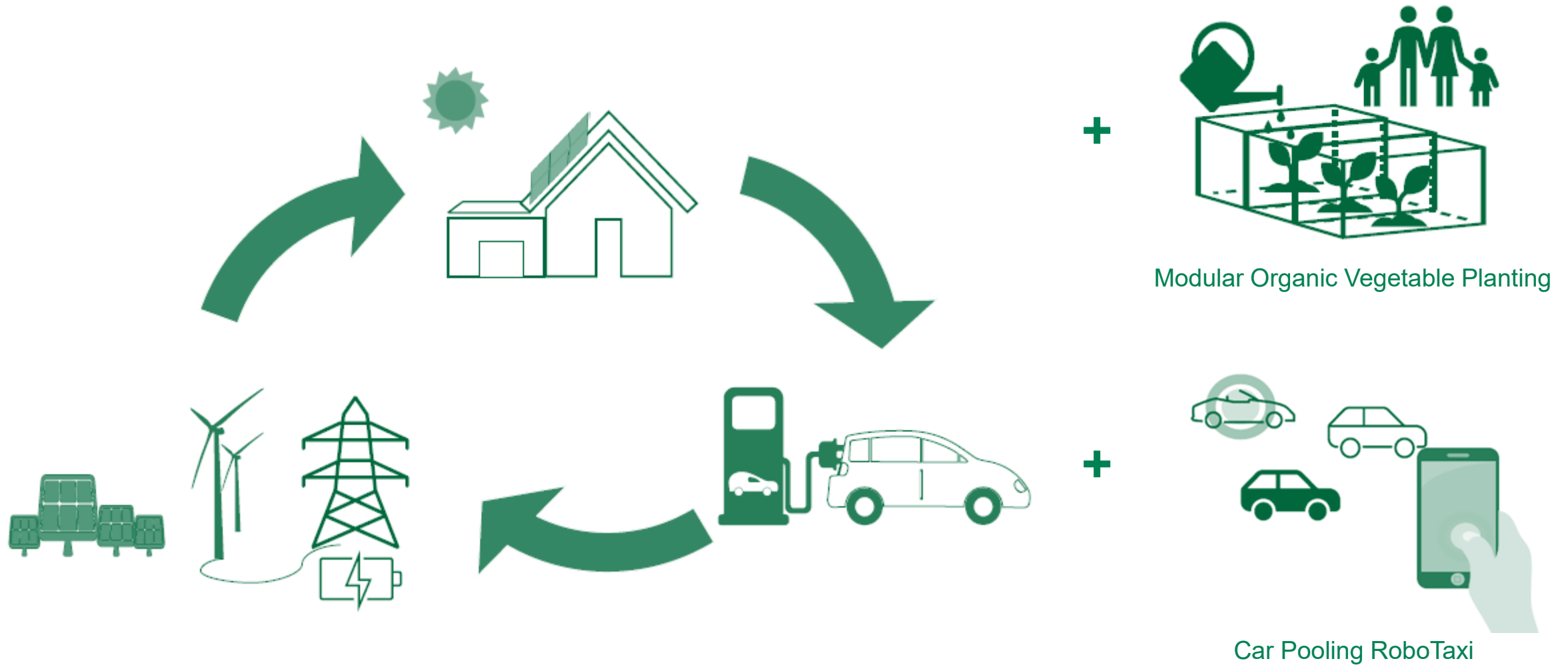


CRYPTO MINING SYSTEM



# ALSET SUSTAINABLE HEALTHY LIVING SYSTEM

EHOME COMMUNITY DEVELOPMENT



Around The Clock **Effective** Energy Usage + **Monetary Gains** Through Sale Of Excessive Stored Energy + RoboTaxi Services

**Alset EHome** focus on building a **Sustainable Healthy Living System** including a **REIT for long-term income**.

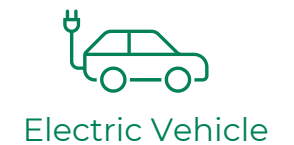
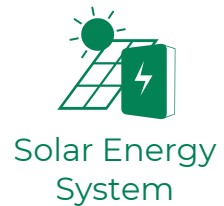
**1 BUILD FOR SALE**

Property Management Services included for Investors looking to earn rental yield.

**2 BUILD FOR RENT**

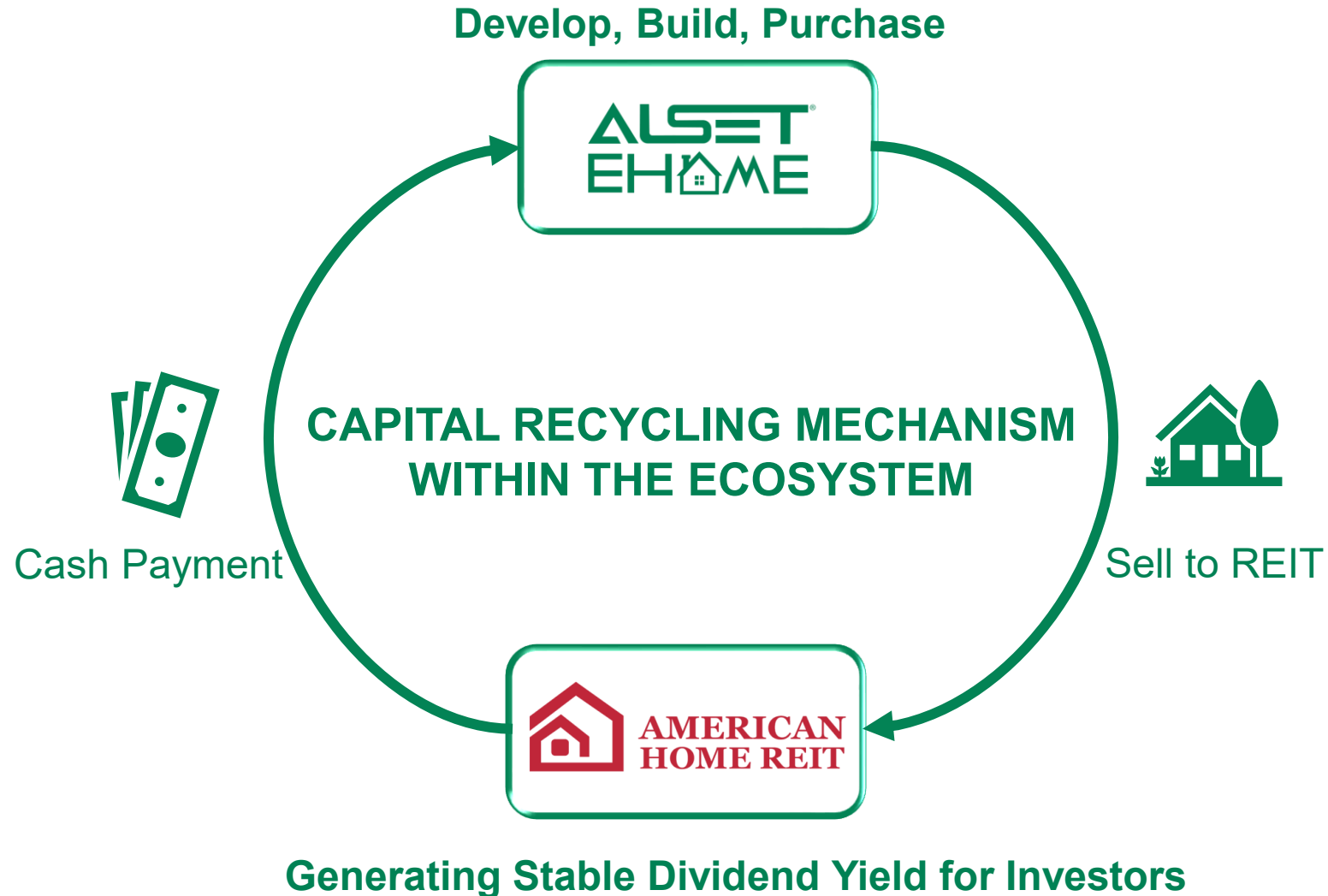
**3 TRANSFER TO AMERICAN HOME REIT**  
**Target: 5% Yield**

**ALL ALSET EHOME COMES WITH**





# CAPITAL RECYCLING – UNLIMITED GROWTH



# AMERICAN HOME REIT



## American Home REIT INC. (AHR)

AHR actively source for and manage value-add, high yielding real estate in the United States. AHR engages in bulk purchases of large gated Single-Family Homes (SFHs) communities that meet the investment requirements. This includes an existing organic pipeline from the parent company that holds Lakes at Black Oak, Houston. AHR will further acquire other developed land areas from other developments. AHR seeks to generate high and stable rental returns for unit holders.

## AHR Management INC.

AHR Management Inc. is a REIT management company that sets the strategic vision and formulate investment strategies for American Home REIT Inc. It manages the REIT assets and liabilities and provide recommendations to on acquisition and divestments in accordance with the investment strategies.

## LEVERAGING ON ALSET EHOME RENTAL UNITS

Recurring income streams  
Ensures quality control  
Economies of scale  
(Cost-effective management)

## American Home REIT Video



VISIT WEBSITE



# CHAIRMAN'S REIT TRACK RECORD



## AMERICAN HOUSING REIT



Click to view brochure

Single Family Homes  
+  
Senior Homes

8%  
annualised yield quarterly

The Business Times, Thursday, December 12, 2013

# Heng Fai eyes Reits, secondary listings

**HK firm outlines growth strategy after sale of its stake in SingHaiyi**

By **ONG CHOR HAO**  
ongch@sph.com.sg

HONG KONG-listed Heng Fai Enterprises (HFE), backed by the former controlling shareholder of Catalyst-listed SingHaiyi, Chan Heng Fai, could do a secondary listing in Singapore as it shifts focus to real estate investment trusts (Reits).

Mr Chan, who is managing chairman at HFE, and his son Tony Chan, who is managing director, yesterday detailed their plans for the company, which had just completed a strategic review following the disposal of its entire stake in SingHaiyi early in the year.

With the gains made

from the disposal, HFE will concentrate on seeding and growing Reits starting with the US market. The younger Mr Chan said earnings have been lumpy over the years with HFE historically focused on turning troubled companies around.

"Our goal now is to re-engineer the company to focus on an ongoing, recurring business because we recognise that the lumpiness that we have created in our historical P&L (profit and loss) statement is not conducive for a listed company," he said.

HFE recorded a loss of HK\$36.3 million (S\$5.85 million) for the six months ended Sept 30, 2013, an improvement from the loss of HK\$45.3 million the year before.

Further, Asian markets such as Singapore, Hong Kong and China are becoming

riskier with higher costs, local cooling measures and uncertainty over interest rates. Meanwhile, the US property market is still on the upswing, Mr Tony Chan said.

HFE also plans to raise capital for the company and the Reits under its management through listings on other exchanges. Among those considered are Singapore, London and the United States.

The company has taken the first steps in its new direction. It is in the process

of buying 100 homes in Texas as by the end of 2013 for a US-listed vehicle to be re-named American Housing Reit. The plan is to grow this number to 300 homes by the end of next March.

In which HFE owns 94.9 per cent, will focus on single-family homes and is expected to have an annual yield of 8 per cent. The first payout is slated for the quarter ending next March.

"We are actually able to pay at maturity yields right off the bat," Mr Tony Chan said, as the Reit will not buy a home without an acceptable tenant in place.

In the quarter following that first distribution, the Reit is likely to raise capital by issuing new shares in

## COMPANY NEWS 9



the US market, with a view to moving from its current over-the-counter listing to the Nasdaq Global Market by the end of financial year 2015.

"The plan is once we are able to pay out our first dividend and demonstrate the viability of the model, we

can then raise money to management fees for Mr Chan Heng Fai HFE.

He also has a bold vision for the parent company. "I think this will be definitely the number one factor for growth company listed on the Hong Kong Stock Exchange in the next five years."

Future moves: Mr Chan Heng Fai (left) and his son Tony Chan detailed their plans for Heng Fai Enterprises' growth company listed on the Hong Kong Stock Exchange in the next five years.

PHOTO: YEN HING JIN

B12 MONEY THURSDAY, DECEMBER 12, 2013 THE STRAITS TIMES

### 'White knight' looks to US property market to fuel returns

Reit can harness potential for capital appreciation

By **BARCEL RIZALLI**

SINGAPORE — Chan Heng Fai, who controls the reins of Heng Fai Enterprises, is looking to expand his real estate portfolio through direct corporate restructuring, an ever for Hong Kong-based Heng Fai Enterprises.

The company, which recently walked the boards of Singapore-listed SingHaiyi by selling to the private Chinese investor, is looking to raise capital for the company and the Reits under its management through listings on other exchanges. Among those considered are Singapore, London and the United States.

The company has taken the first steps in its new direction. It is in the process of buying 100 homes in Texas as by the end of 2013 for a US-listed vehicle to be re-named American Housing Reit. The plan is to grow this number to 300 homes by the end of next March.

In which HFE owns 94.9 per cent, will focus on single-family homes and is expected to have an annual yield of 8 per cent. The first payout is slated for the quarter ending next March.

"We are actually able to pay at maturity yields right off the bat," Mr Tony Chan said, as the Reit will not buy a home without an acceptable tenant in place.

In the quarter following that first distribution, the Reit is likely to raise capital by issuing new shares in

### LINE ENERGY

INITIAL PUBLIC OFFERING

Investment Merits

LINE ENERGY LTD is a diversified energy company with operating control of a global portfolio of conventional and unconventional oil, gas and coal assets, and proven Underground Coal Gasification (UCG) technology ready for commercialisation.

Offering in excess of 47,000,000 shares at S\$0.25 per share. Offer period from Dec 12 to Dec 18, 2013. Offer closes on Dec 18, 2013.

Offering by way of Initial Public Offering

### 8% annualised yield quarterly

Single Family Homes + Senior Homes

Offering in excess of 47,000,000 shares at S\$0.25 per share. Offer period from Dec 12 to Dec 18, 2013. Offer closes on Dec 18, 2013.

Offering by way of Initial Public Offering

D COMPANIES THE STRAITS TIMES THURSDAY, DECEMBER 12, 2013

### From 'white knight' to Reit grower

Heng Fai Enterprises is seeing results from its first two Reits

Reports by **Lim Mee Han**  
limm@sph.com.sg

SINGAPORE — Heng Fai Enterprises is looking to expand its real estate portfolio through direct corporate restructuring, an ever for Hong Kong-based Heng Fai Enterprises.

The company, which recently walked the boards of Singapore-listed SingHaiyi by selling to the private Chinese investor, is looking to raise capital for the company and the Reits under its management through listings on other exchanges. Among those considered are Singapore, London and the United States.

The company has taken the first steps in its new direction. It is in the process of buying 100 homes in Texas as by the end of 2013 for a US-listed vehicle to be re-named American Housing Reit. The plan is to grow this number to 300 homes by the end of next March.

In which HFE owns 94.9 per cent, will focus on single-family homes and is expected to have an annual yield of 8 per cent. The first payout is slated for the quarter ending next March.

"We are actually able to pay at maturity yields right off the bat," Mr Tony Chan said, as the Reit will not buy a home without an acceptable tenant in place.

In the quarter following that first distribution, the Reit is likely to raise capital by issuing new shares in

### White knight looks to US property market to fuel returns

Reit can harness potential for capital appreciation

By **BARCEL RIZALLI**

SINGAPORE — Chan Heng Fai, who controls the reins of Heng Fai Enterprises, is looking to expand his real estate portfolio through direct corporate restructuring, an ever for Hong Kong-based Heng Fai Enterprises.

The company, which recently walked the boards of Singapore-listed SingHaiyi by selling to the private Chinese investor, is looking to raise capital for the company and the Reits under its management through listings on other exchanges. Among those considered are Singapore, London and the United States.

The company has taken the first steps in its new direction. It is in the process of buying 100 homes in Texas as by the end of 2013 for a US-listed vehicle to be re-named American Housing Reit. The plan is to grow this number to 300 homes by the end of next March.

In which HFE owns 94.9 per cent, will focus on single-family homes and is expected to have an annual yield of 8 per cent. The first payout is slated for the quarter ending next March.

"We are actually able to pay at maturity yields right off the bat," Mr Tony Chan said, as the Reit will not buy a home without an acceptable tenant in place.

In the quarter following that first distribution, the Reit is likely to raise capital by issuing new shares in

### SingHaiyi eyeing more distressed US property

US, having been around since 1976, has been paying out a steady stream of dividends to its shareholders.

Mr Chan's father, who spent eight years helping his sons in the operation, was given a 50 per cent stake in the company in 2002. He was later named chairman and chief executive officer.

Today, as a fully listed business, Mr Chan has a more active role in the company's management, but he is not involved in day-to-day operations. He is still a hands-on manager, but he is not involved in day-to-day operations.

Mr Chan's father, who spent eight years helping his sons in the operation, was given a 50 per cent stake in the company in 2002. He was later named chairman and chief executive officer.

Today, as a fully listed business, Mr Chan has a more active role in the company's management, but he is not involved in day-to-day operations. He is still a hands-on manager, but he is not involved in day-to-day operations.

# CHAIRMAN'S REIT TRACK RECORD



GLOBAL  
MEDICAL REIT

**NYSE** Listed

IPO Price: \$10 per share  
Current Price: **\$15+**

Annualized Yield of **8%** at IPO

Added into **MSCI US REIT** Index  
MSCI 

Market Cap: > **\$900 Million**



**TOP 10** Best REITs  
for the Rest of 2021

Source:  
<https://www.kiplinger.com/investing/reits/603383/10-best-reits-for-the-rest-of-2021>



Click to view brochure

*Annualised Yield of 8% at IPO (USD 10.00 a share)  
(Stock high of USD 14.26 in 2019m USD 15.65 in 2020)*  
**NYSE Listed**





**ALSET**  
POWER FARM

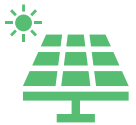




**Alset EHome Inc.**  
(Nevada)

100%

**ALSET**  
POWER FARM



Solar Energy



Wind Energy



Crypto Mining



Organic Vegetable

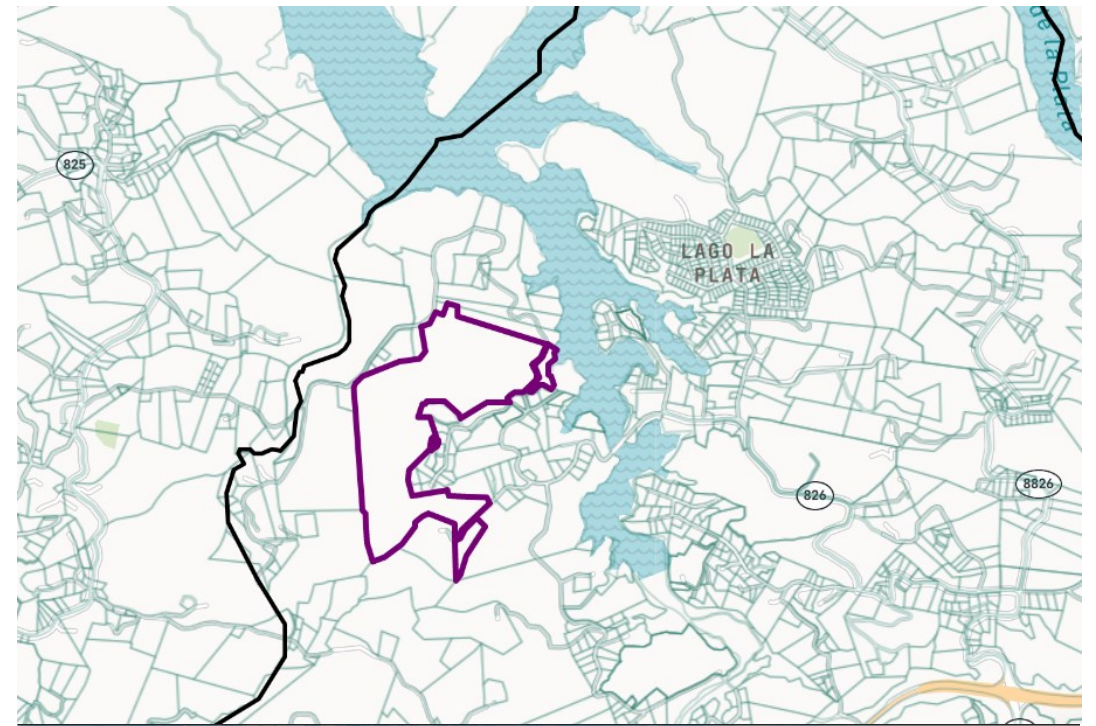


Eco Green Tourism



**Location:** Guadiana, Naranjito, Puerto Rico  
Located in front of La Plata Lake and with direct access to the lake.

**Land Size:** 60 acres







Using **Renewable Energy Farm** to Generate  
Clean Energy used for **Crypto Mining**

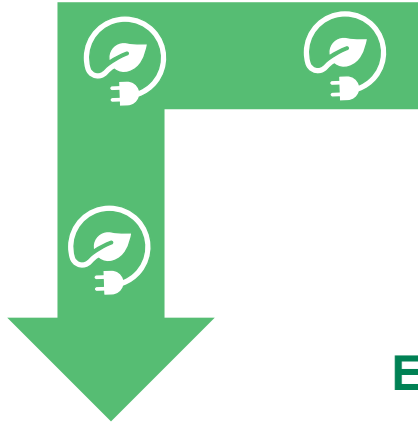






**ALSET**  
POWER FARM

**Electrical Storage** to supply **Clean Energy** for



**ALSET**  
EHOME

EHome Communities

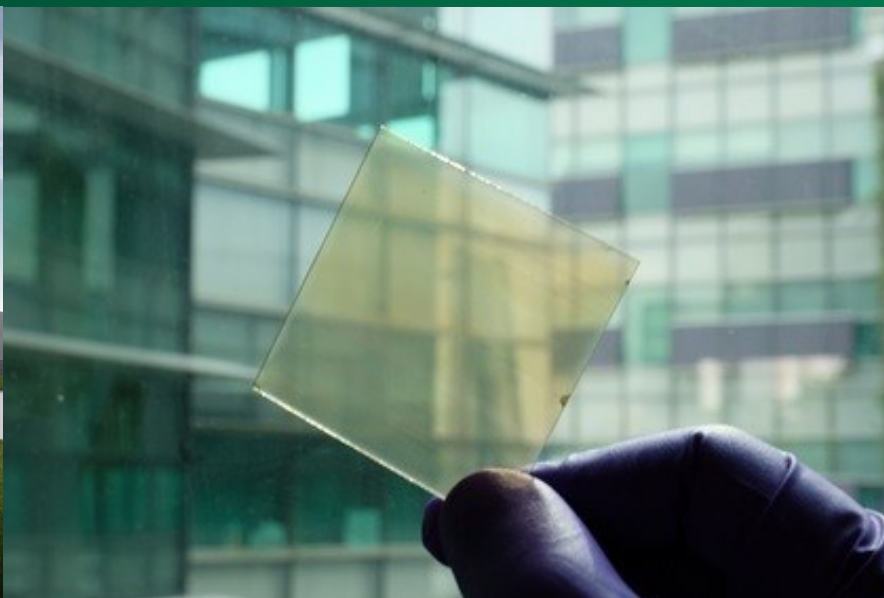


**ALSET**  
CRYPTO MINING

Crypto Mining Farm



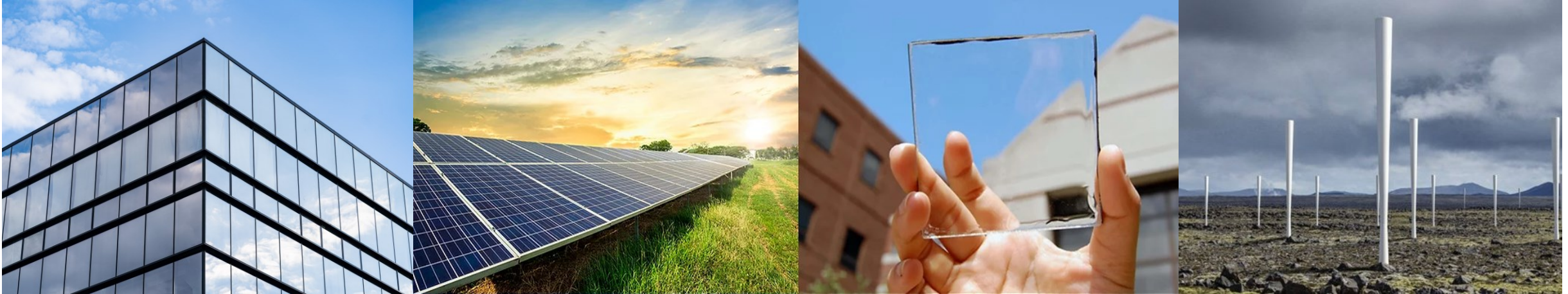




**ALSET**  
GREEN TECH







Focused on research and development of renewable technology Intellectual Properties (IP) that develops:

New Electricity Generation Technology

Improved Energy Generation Efficiency

Improved Energy Storage Efficiency

## **Quantum Dot Technology:**

To capture and translate extra-band energy into the visible spectrum for efficient collection.

# ALSET CORPORATE VIDEOS



The New Alset



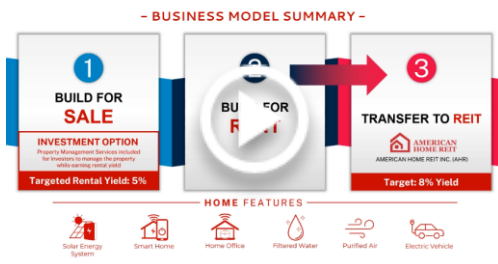
AEI 2022 Corporate Update



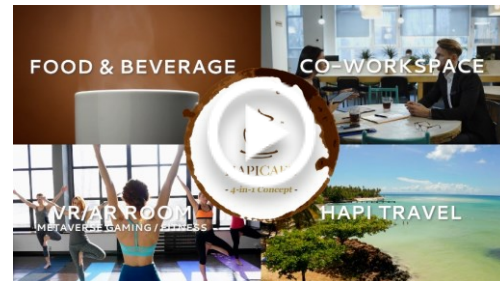
Alset EHome Concept Video



Alset EHome Corporate Video



Alset EHome Business Model



Hapi Cafe Introduction



Mr Chan's Property Track Record



Recap on Recent Ecosystem Development



American Home REIT



AEI Business Overview



AEI New Feature: Crypto Mining



American Pacific Bancorp Introduction



# EXTERNAL VIDEOS



Elon Musk JUST REVEALED The First Sustainable Tesla Home!



Elon Musk Officially Revealed The First Tesla Home!



IT HAPPENED! Elon Musk JUST REVEALED Tesla's First Tiny House



Tesla Short Sellers through the years  
🤡 Let's have a little fun 🤡



Alset Ehome has a lot of new things cooking!



Alset EHome International: Diversified Operations Accelerating Sustainable Healthy Living



Your future house will come with a FREE Tesla | The Tesla home is coming alive NOW with Alset eHome



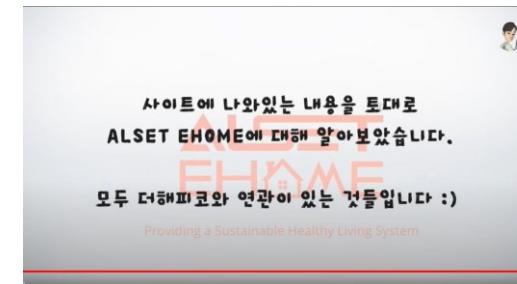
[자막] 또 하나의 나스닥 기업 #1 Alset EHome International



"Health, Wealth & Happiness" Alset Ehome's community



Alset Ehome is on cost and ahead of schedule, could do some big moves at the end of year



또 하나의 나스닥 기업 #2 집을 사면 #테슬라 를 준다고?? Alset EHome International

# PROPERTY DEVELOPMENT TRACK RECORD IN SINGAPORE

CITYLIFE@TAMPINES



CHARLTON RESIDENCES



PASIR RIS ONE



COSMOLOFT



**FIND OUT MORE:**

[www.chanhengfai.com/property-development](http://www.chanhengfai.com/property-development)



# CHAIRMAN PROPERTY DEVELOPMENT TRACK RECORD



These are the return figures of the Chairman's property development and investment track record.

\* The average IRR excluding Suntec City Tower (IRR of 199%) is 39%

\* All track records pertain to Mr. Chan Heng Fai from his previous and current companies under his management

# CHAIRMAN PROPERTY DEVELOPMENT TRACK RECORD

## Realized Investments

<p><b>Textile Centre</b> Singapore Commercial property Entry in 2007</p>	<ul style="list-style-type: none"> <li>• 36% investor IRR realized</li> <li>• 3.1 times investment multiple realized</li> <li>• Exit gross value of S\$18 million</li> </ul>	<p><b>The Arcadia</b> Singapore Residential property Entry in 2006</p>	<ul style="list-style-type: none"> <li>• 30% investor IRR realized</li> <li>• 4.3 times investment multiple realized</li> <li>• Exit gross value of S\$11 million</li> </ul>
<p><b>Hong Kong Apartment Portfolio*</b> Hong Kong Residential property Entry in 2009</p>	<ul style="list-style-type: none"> <li>• 58% investor IRR realized</li> <li>• 2.5 times investment multiple realized</li> <li>• Exit gross value of S\$19 million</li> </ul>	<p><b>Island Place Tower</b> Hong Kong Commercial property Entry in 2004</p>	<ul style="list-style-type: none"> <li>• 30% investor IRR realized</li> <li>• 5.1 times investment multiple realized</li> <li>• Exit gross value of S\$23 million</li> </ul>
<p><b>The Sail</b> Singapore Residential property Entry in 2004</p>	<ul style="list-style-type: none"> <li>• 30% investor IRR realized</li> <li>• 1.7 times investment multiple realized</li> <li>• Exit gross value of S\$3 million</li> </ul>	<p><b>Suntec City Tower</b> Singapore Residential property Entry in 2004</p>	<ul style="list-style-type: none"> <li>• 199% investor IRR realized</li> <li>• 5.4 times investment multiple realized</li> <li>• Exit gross value of S\$26 million</li> </ul>
<p><b>Southbank*</b> Singapore Residential/Commercial property Entry in 2011</p>	<ul style="list-style-type: none"> <li>• 56% investor IRR realized</li> <li>• 2.6 times investment multiple realized</li> <li>• Exit gross value of S\$12 million</li> </ul>	<p><b>The Central*</b> Singapore Commercial property Entry in 2010</p>	<ul style="list-style-type: none"> <li>• 49% investor IRR realized</li> <li>• 3.2 times investment multiple realized</li> <li>• Exit gross value of S\$34 million</li> </ul>
<p><b>CityLife@Tampines*</b> Singapore Commercial property Entry in 2010</p>	<ul style="list-style-type: none"> <li>• 24% investor IRR realized</li> <li>• 2.2 times investment multiple realized</li> <li>• Total development value of S\$528 million</li> </ul>	<p><b>Carlton Residences*</b> Singapore Commercial property Entry in 2010</p>	<ul style="list-style-type: none"> <li>• 39% investor IRR realized</li> <li>• 3.4 times investment multiple realized</li> <li>• Total development value of S\$60 million</li> </ul>

\* These investment properties were deemed to be realized upon disposal of holding company. Property developments were 100% pre-sold and IRR estimated. Holding company is a listed company which is audited annually.

\* All track records pertain to Mr. Chan Heng Fai from his previous and current companies under his management



# CHAIRMAN PROPERTY DEVELOPMENT TRACK RECORD

## 香港 Hong Kong

### 商业大厦 COMMERCIAL

北角港运大厦 Island Place Tower, North Point  
北角联合出版大厦 SUP Tower, North Point

### 工业 INDUSTRIAL

九龙官塘官塘道 326 号 No. 326 Kwun Tong Road, Kwun Tong, Kowloon  
九龙官塘好运工业大厦 Good Luck Industrial Building, Kwun Tong, Kowloon

### 住宅 RESIDENTIAL

九龙淘大花园 Amoy Gardens, Kowloon  
新界屯门叠茵庭 Parkland Villas, Tuen Mun, N.T.  
新界屯门聚康山庄 Beneville, Tuen Mun, N.T.  
新界屯门泽丰花园 Affluence Garden, Tuen Mun, N.T.  
新界荃湾荃湾中心 Tsuen Wan Centre, Tsuen Wan, N.T.  
新界荃湾荃德花园 Tsuen Tak Gardens, Tsuen Wan, N.T.  
九龙德宝花园 Tak Bo Garden, Kowloon  
筲箕湾筲箕湾中心 Shaukeiwan Centre, Shaukeiwan  
旺角金国中心 The Platinum, Mongkok  
新界屯门大兴花园 Tai Hing Gardens, Tuen Mun  
薄扶林碧瑶湾 Baguio Villa, Pokfulam

### 土地 LAND

新界大屿山丈量约份 316 号 (地段编号 1210 及 1211 号) Lot No. 1210 and 1211, Demarcation District (No. 316, Lantau Island, N.T.)  
九龙九龙城启德道 28-30 号 Nos. 28-30 Kai Tak Road, Kowloon City, Kowloon  
九龙红磡必嘉街 16-20 号 Nos. 16-20 Baker Street, Hung Hom, Kowloon

## 新加坡 Singapore

### 住宅 RESIDENTIAL

The Arcadia  
Dakota Residences  
The Sail

### 商业 COMMERCIAL

Textile Centre  
The Centre  
Suntec Tower 2  
Southbank SOHO

## 美国 United States

### 商业 COMMERCIAL

Northeast Corner of Tustin Avenue and Katilla Avenue, Orange City, Orange Country, California

## 加拿大 Canada

### 商业 COMMERCIAL

981 Nelson Street, Vancouver, British Columbia  
53rd Street Delta, British Columbia

### 住宅 RESIDENTIAL

1281 Alberni Street, Vancouver

## 日本 Japan

### 商业 COMMERCIAL

宫崎市 Hotel Plaza Miyazaki  
Hotel Plaza Miyazaki, Miyazaki City

## 香港 Hong Kong

### 公共屋村与居者有其屋计划「居屋计划」 PUBLIC HOUSING ESTATES AND HOME OWNERSHIP SCHEMES ( "H.O.S." )

蝴蝶村第五期居屋计划 Butterfly Estate, Phase V, H.O.S.  
长青村第二期扩建工程 Cheung Ching Estate Phase II Extension  
祖尧村 Cho Yiu Estate  
彩云村第二期 A Choi Wan Estate, Phase IIA  
彩云村第二期 B Choi Wan Estate, Phase IIB  
彩云村第三期 Choi Wan Estate, Phase III  
彩云村第四期 Choi Wan Estate, Phase IV  
富山村 Fu Shan Estate  
观塘中区居屋计划 Kwun Tong Central H.O.S.  
黄大仙下村第三期 Lower Wong Tai Sin Estate, Phase III  
宝安街市与居屋计划 Po On Market & H.O.S.  
启德村第一、二期 R.A.F. Kai Tak Estate, Phase I & II  
石湖墟村第一期 Shek Wu Hui Estate, Phase I  
新翠村第三期 Sun Chui Estate, Phase III  
大元村第一期 Tai Yuen Estate, Phase I  
青衣村第一期居屋计划 Tsing Yi Estate, Phase I, H.O.S.  
青衣虎头山村 Tsing Yi Tiger' s Head Village Resite  
东头村第一期 Tung Tau Estate, Phase I  
横头磡村第一期 Wang Tau Hom Estate, Phase I  
禾輋村 Wo Che Estate  
黄岗山村第一期 Wong Kong Shan Estate, Phase I  
黄岗山村第三期 Wong Kong Shan Estate, Phase III

### 商业大厦 COMMERCIAL

道亨银行大厦 Dao Heng Bank Building  
大利楼 Tai Lee Building  
德仁商业大厦 Tak Yan Commercial Building  
彩云社区中心 Choi Wan Estate Community Centre  
尖东消防署总部 Fire Services Headquarter, Tsim Sha Tsui East  
加士居道司法大楼 Judiciary Building, Gascoigne Road  
启德机场 747 墩桥前端 Kai Tak Airport, 747 Nose-in-plier  
启德机场候机室扩建工程 Kai Tak Airport Terminal Building, Extension  
葵涌 N.T.S.D 车库 Kai Tak Airport Terminal Building, Fitting Out work  
牛头角住宅/市政大厦 Kwai Chung N.T.S.D. Garage  
红十字会输血服务中心 Ngau Tau Kok Housing / Marketing Complex  
沙田 3D 区 (Area 3D) 中学 Red Cross Blood Transfusion Centre  
沙田法院 Secondary School, Area 3D, Shatin  
顺利村中学及社区中心 Shatin Lawcourt  
土瓜湾市政大厦暨政府合署 Shun Lee Estate, Secondary School & Community Centre  
荃湾多层停车场与运输交汇处 To Kwa Wan Market and Government Office  
Tsuen Wan Multi-storey Carpark & Transport Interchange

### 工厂 INDUSTRIAL

长沙湾分层工厂 Cheung Sha Wan, Flatted Factory  
火炭约分层工厂 Fo Tan Yeuk, Flatted Factory  
建煌工业大厦 Keng Fong Industrial Building  
九龙湾分层工厂 Kowloon Bay, Flatted Factory  
葵涌工业大厦 Kwai Chung Industrial Building  
广联泰工厂 Kwong Luen Tai factory  
屯门区 9 号分层工厂 Tuen Mun Area 9, Flatted Factory

### 住宅 RESIDENTIAL

上海街 217-223 号 217-223 Shanghai Street  
皇后大道西 222-224 号 222-224 Queen' s Road West  
松园公寓 (Cedar Apartments) Cedar Apartments  
翠珍珠 Chea Jun House  
延文别墅 Inverness Villas  
建福大厦 Kin Fook Mansions  
景林公寓 King Lam Apartments  
摩顿台 Moreton Terrace  
礼贤楼 Rhenish Mansions  
德仁大厦 Tak Yan Mansion  
寿山村道 26 号联排别墅 Townhouses at 26 Shouson Hill Road  
东山别墅 Tung Shan Villas  
金碧别墅 Villa Dorado  
裕仁大厦 Y.Y. Mansions  
益群苑 Yik Kwan Villas

## 新加坡 Singapore

### 住宅 RESIDENTIAL

Charlton Residences, 1 Charlton Road  
Pasir Ris One, Pasir Ris Central  
CityLife@Tampines, Tampines Central Ave 7/9  
CosmoLoft, 235 Balestier Road

## 美国 United States

### 住宅 RESIDENTIAL

美国加州蒙特利公园市连栋屋 Townhouses, Monterey Park, California  
美国加州阿罕布拉公寓大楼 Condominiums, Alhambra, California  
美国加州阿罕布拉连栋屋 Townhouses, Alhambra, California

## 加拿大 Canada

### 住宅 RESIDENTIAL

加拿大温哥华温莎花园 Windsor Gardens, Vancouver, Canada  
加拿大不列颠哥伦比亚三角洲 Ladner Pointe, Delta, B.C., Canada  
Ladner Pointe

## 马来西亚 Malaysia

### 住宅 RESIDENTIAL

马来西亚豪华公寓大楼 Sri Tunku, luxury condominiums  
Sri Tunku

# CHAIRMAN'S TRACK RECORD

From just **5 out of 35** previously restructured companies:



**Fai H Chan**  
Chairman

Approx. Current **Market Cap Over**

**USD 19.9 Bn**  
AND GROWING

[View Latest  
Financial  
Update](#)

Bringing in **Profits** of over

**USD 1 Bn**  
PER ANNUM

2020/2021 Financial Update  
of 5 companies

**USD 18.1 Bn**

2020/2021 Revenue  
approximately

**USD 10.3 Bn**

2020/2021 Profits  
approximately

**USD 1.4 Bn**

## ZH International Limited

Formerly Known as Heng Fai Enterprises



Hong Kong Stock Exchange Listed  
Restructured from the verge of Bankruptcy



INTER ASIA



American Pacific Bank

## Global Medical REIT



New York Stock Exchange Listed  
Founded and Funded from Ground Zero



CHINAGAS  
中國燃氣



GLOBAL MED  
TECHNOLOGIES



Skywest

## SingHaiyi Ltd

Formerly Known as SingXpress Land



Singapore Exchange Listed  
Restructured from the verge of Bankruptcy

## China Gas Holdings Ltd



Hong Kong Stock Exchange Listed  
Restructured from the verge of Bankruptcy

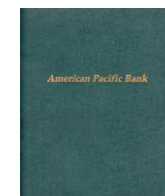


SINGHAIYI  
GROUP



Heng Fai Enterprises Limited  
恒豐企業控股有限公司  
Hong Kong Stock Exchange: 115

## American Pacific Bank



NASDAQ Listed  
Recapitalized from the verge of Bankruptcy



GLOBAL  
MEDICAL REIT

[www.fai185.com](http://www.fai185.com)

[www.chanhengfai.com](http://www.chanhengfai.com)

[Watch Video](#)

[观看视频](#)



# DIRECTORS, MANAGEMENT & ADVISOR TEAM



CHAN HENG FAI



CHAN TUNG MOE



ROBERT TRAPP



WILLIAM WU



WONG TAT KEUNG



CHARLES W.S. MACKENZIE



ANG HAY KIM AILEEN



DANNY LIM



ALAN LUI



RONALD WEI



MICHAEL GERSHON



ANTHONY CHAN



SHAMAR O'BRYANT



MELISSA K. SIMS



FARAH KHAN



SHIRLEY LAU



ADAM TAN



LIAW WEI SHENG



**THANK YOU!**

Visit Us at: [www.asetehome.com](http://www.asetehome.com)